



*Highest Quality Post Drivers and Post Pullers*

# PD-45 and PD-55

**Air-Operated Post Drivers**

**OWNER'S MANUAL**

# TAKE SAFETY SERIOUSLY

Your safety, and the safety of others, is very important. The proper and safe use of your Rhino® post driver is an important responsibility and should be taken seriously.

## PD-55

Keep this owner's manual handy, so you can refer to it at any time. This owner's manual is considered a permanent part of the post driver and should remain with the post driver if resold.

The information and specifications included in this publication were in effect at the time of approval for printing. Rhino Tool Company, Inc. reserves the right, however, to discontinue or change specifications or design at any time without notice and without incurring any obligation whatever. No part of this publication may be reproduced without written permission from Rhino Tool Company.



To help you make informed decisions about safety, you will find important safety information in a variety of forms, including:

- Safety Labels on the post driver
- Safety Messages Preceded by a safety alert symbol and one of three signal words, DANGER, WARNING, or CAUTION.

These signal words mean:



**Immediate hazards that will result in severe personal injury or death.**



**Hazards or unsafe practices that could result in personal injury.**



**Hazards or unsafe practices that could result in injury, product or property damage.**

- Safety Headings such as **IMPORTANT SAFETY INFORMATION.**
- Safety Section such as **POST DRIVER SAFETY.**
- Instructions how to use this post driver correctly and safely.

This entire book is filled with important safety information. Please read it carefully

# CONTENTS

Section	Page
<b>Safety Symbol Description</b> .....	i
<b>Table of Contents</b> .....	ii
<b>Introduction</b> .....	iii
<b>Rhino® PD-45 and PD-55 Safety</b> .....	1
<b>Chuck Sizing Guide</b> .....	4
<b>Assembling PD-45 and PD-55 to Post Driving System</b> .....	5
<b>Rhino® PD-45 and PD-55 Operating Instructions</b> .....	7
<b>Rhino® PD-45 and PD-55 Service Instructions</b> .....	9
<b>Rhino® PD-45 Parts List</b> .....	12
<b>Rhino® PD-55 Parts List</b> .....	12
<b>Limited Warranty and Registration</b> .....	14
<b>Rhino® Air Operated Post Driver Troubleshooting</b> .....	15

# INTRODUCTION

Congratulations on your selection of the Rhino® PD-45 or PD-55 post driver. We are certain that you will be pleased with your purchase. Rhino® Air Operated Post Drivers are built with extremely high quality components. From the casted body to the internal piston, each component and accessory for the drivers are first quality and when operated and stored properly will serve you for several years. See the chart to the right for post driving applications these drivers are suited for.

We suggest you read the warranty information fully and understand its coverage and your responsibilities of ownership. To receive a warranty extension on the driver components, log on to <http://rhinopostdrivers.com/contact-support/warranty-information/> and fill out the owner's registration.

When your Rhino® post driver needs scheduled maintenance, the technical service staff here at Rhino Tool Company is standing by to assist you if you require assistance. Our fully trained staff can walk you through the process of inspecting and maintaining your post driver if you experience difficulty. Again, congratulations on your selection and from the dedicated team here at Rhino Tool Company, THANK YOU for choosing a genuine Rhino® post driver.

Kindest Regards,  
The Rhino Tool Team

Model	PD-45	PD-55
Duty	Medium	Medium
Air Consumption (CFM@90 psi)	30	42
Wt. lb (kg)	46.3 (311)	54.6 (24.8)
Master Chuck	3" ID	3-7/8" ID
<b>Applications</b>		
Fiberglass T Posts	X	X
3/4" to 1" Ground Rod	X	X
3/4" to 1-1/2" Reinforcing Bar Tent Stakes	X	X
1" Concrete Form Pins	X	X
1" Pipe	X	X
1-1/4" to 1-1/2" Pipe	X	X
1-5/8" Pipe	X	X
2" Pipe	X	X
2-1/2" to 3" Pipe		X
T Posts	X	X
Telespar Posts		X
Telespar Post Breakaway Bases *		X
1.2 to 1.5 lbs/ft Channel Posts	X	X
2 to 2.75 lbs/ft Channel Posts		X
3 to 4 lbs/ft Channel Posts		X
Channel Post Breakaway Bases *		X
C Posts		X
Rectangular Posts	X	X

\* To drive these type of posts close to the ground you will need to order a special driving cap.

# Rhino® PD-45/PD-55 SAFETY

The Rhino® PD-45 and PD-55 Post Drivers are designed to drive many types of post and other like items into the ground. (See Chart on page iii) Uses, other than those intended, can result in injury to the operator, others near by, or damage to the driver and to the surrounding area may result as well.

This post driver is intended for use by professional installers. Never allow untrained personnel or children to operate this tool.

Most accidents can be prevented if you follow all instructions in this manual and on the post driver. The most common hazards are described in the following text, along with the best method to protect yourself and others. If you or any operator doesn't understand any of the instructions, call Rhino at (309) 853-5555 or toll free 866-707-1808 and we will be happy to answer any questions.

It is **VERY IMPORTANT** to understand that your driver is a very powerful machine.



**DANGER**

**AVOID SERIOUS INJURY OR DEATH, READ BEFORE USING YOUR POST DRIVER!**



**DANGER**

**UNDERGROUND UTILITIES:** Be absolutely sure you know where all underground utilities are before driving so you can avoid hitting them while driving a post into the ground. Utilities include but are not limited to Electric, Gas, Telephone, Water, Sewer, TV Cable, Lawn Sprinklers, Etc. Hitting an underground utility could be **EX-**

## IMPORTANT SAFETY INFORMATION

**TREMELY DANGEROUS** for the operator and others.



**DANGER**

**AIR PRESSURE:** You must use a Filter-Regulator-Lubricator combination with your Rhino Air Operated Post Driver. The use of the pressure regulator is required for safety. Set the pressure regulator at 90 PSI (6.4 kg/cm<sup>2</sup>). Higher air pressures will not make your driver perform better. High air pressure could cause your post driver to lift off and fall from the post causing serious injury or death. Do not tie down the throttle valve so it will not shut off when released. If the throttle valve does not stop the unit immediately when released, repair or replace it. **Slowly squeeze the air throttle valve lever to start the driver.** Opening the throttle valve slowly will prevent a violent start of the driver. Never use anything to keep the throttle valve lever in the open position other than the operator's hand. For safety, the valve must close, stopping the drive, when the operator releases the valve lever.



**DANGER**

**CHUCK SIZING:** A chuck or chuck adapter that is too large for the post being driven may contribute to a condition which would allow the post driver to fall from the post causing serious injury or death. Do not use a chuck or chuck adapter that is too large for the post being driven. The post should be loose in the chuck or chuck adapter with a minimum of 1/8" (3 mm) clearance and not over 5/8" (15.9 mm) clearance. The post driver piston should hit the post as squarely as possible. If the fit is too loose, damage may be caused to the

## PD-45 and PD-55 DRIVER SAFETY... continued

driver, chuck, or chuck adapter causing them to fail. Chucks and chuck adapters wear out and should be replaced as needed. Inspect your driver's chuck and chuck adapters frequently. If you are in doubt, return your chuck, chuck adapter, or any other part to the factory, freight prepaid, for a free inspection.

**⚠ WARNING SAFETY EQUIPMENT:** Always wear the proper safety equipment when operating the post driver. This includes hard hat, safety glasses, safety shoes, ear protection, back supports, antivibration gloves, and any other safety equipment for the operator and other personnel near the driver as advised by, ANSI, NIOSH, OSHA, or any other safety regulatory agency, or the employer or the owner of this post driver.

**⚠ WARNING SAFETY CHECKS:** Check your driver daily for loose bolts, cracks, bulges or abnormalities in welds, castings, chuck or chuck adapters, top cover, piston, air line, or any other part. Do not repair any parts. Immediately replace excessively worn or defective parts with new parts. Do not run the unit with damaged or defective parts. If you are in doubt, return your driver, chuck, chuck adapter, or any other part to the factory, freight prepaid, for a free inspection.

**⚠ WARNING REMEMBER ALWAYS PUT SAFETY FIRST!** Do not operate the post driver if any unsafe conditions are present.

## IMPORTANT SAFETY INFORMATION

**⚠ CAUTION** Do not put anything but a post into the chuck on your driver.

**⚠ CAUTION** Do not operate your post driver unless it is on a post to be driven. Operation of the driver without it driving on a post could damage it.

**WARNING LABELS:** If your post driver's warning label is marred or destroyed, replace it immediately. Simply call Rhino Tool Company and we will send you a new warning label at no charge.

**LUBRICATION: YOU MUST OIL YOUR POST DRIVER WHILE IT IS OPERATING.** Set the lubricator on your Filter-Regulator-Lubricator in the air line to the post driver so it will deliver approximately 10 drops of oil per minute. Preferably the Filter-Regulator-Lubricator should not be separated from the driver by more than 25 ft. of hose. Make certain that any new air hose between the Filter-Regulator-Lubricator and the post driver has been thoroughly lubricated. The procedure for lubricating the hose is as follows—Remove the air hose from your post driver and **AFTER SECURING THE AIR LINE SO IT CAN'T WHIP AROUND TO INJURE SOMEONE**, open the lubricator wide open so that a steady stream of oil runs into the air stream after the throttle valve has been activated.

Actuate the air throttle valve and run the air through your hose until an oil film is felt coming out of the air hose where it con-

## PD-45 and PD-55 DRIVER SAFETY... continued

nects to the driver. Periodically check to make sure your driver is receiving oil. Air and oil will be exhausted through the chuck. If in doubt, remove the air line from the driver and using the same procedures stated above check to see if an oil film is being exhausted from the hose end that connects to the driver. If oil is coming out of the hose, reconnect the air hose to the driver.

Use SAE 5 wt. oil in cold weather, SAE 10 wt. oil for mild weather to 80 degrees and SAE 20 wt. oil for hot weather. We recommend non-detergent oil to prevent degradation of the air hose. Do not use synthetic oil as it impedes atomization of the oil in the airstream.

**AIR SUPPLY:** You must have an adequate supply of clean air at the proper pressure. Air supplied to your post driver must be

## IMPORTANT SAFETY INFORMATION

filtered. Drain water from the air compressor air tank prior to use. Use a Filter-Regulator-Lubricator to help remove water, rust and other particulate from the air supply. It will greatly increase the life of your post driver and decrease maintenance costs.

### AIR REQUIREMENTS

PD-45: 30 CFM (0.85 m<sup>3</sup>/min.) @ 90 PSI (6.4 kg/cm<sup>2</sup>)

PD-55: 42 CFM (1.19 m<sup>3</sup>/min.) @ 90 PSI (6.4 kg/cm<sup>2</sup>)

**AIR HOSE:** It is recommended that you use a 3/4" double braid air hose with an oil resistant lining to supply air to your post driver.

# Rhino® PD-45/PD-55 Chuck Sizing



## WARNING

A chuck or Chuck Adapter that is too

large for the post being driven may contribute to a condition which would allow the post driver to fall from the post causing serious injury or death!

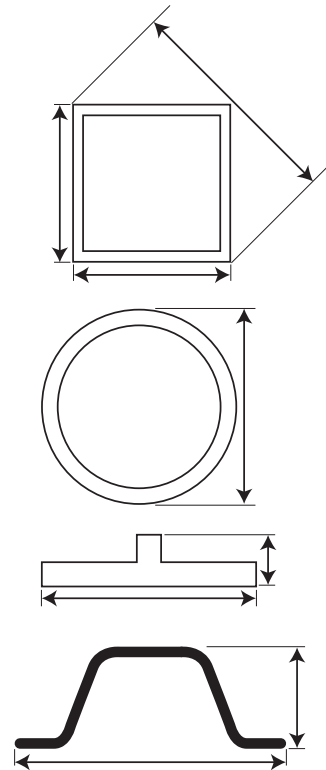
Please note, chuck and chuck adapter sizes shown (**Chart 1**) are actual inside dimensions of the opening. To select the proper adapter, **measure the longest outside dimension** of the post to be driven to confirm it will fit inside the opening. In the case of square or rectangular posts measure the longest diagonal from corner to corner.

**Fig. 1** illustrates how to measure your post outside dimensions to specify the appropriate adapter.

Model	PD-45	PD-55
Description/Actual ID in (mm)	Part No.	Part No.
4-1/4 (107.9)	070060	Optional Master
3 7/8 (98.4)		Master
3-1/2 (88.9)		070609
3 (76.2)	Master	070610
2-1/2 (63.5)	070600	070611
2 (50.8) Heavy	070871	070615
2 (50.8)	070601	070612
1-1/2 (38.1)	070602	070613
1 (25.4)	070603	070614
1.2 to 1.5 Channel	070606	070617
2 to 2.75 Channel		070618
3 to 4 Channel		070619
4-1/16 (103.2) Square Wood Post Chuck		070590

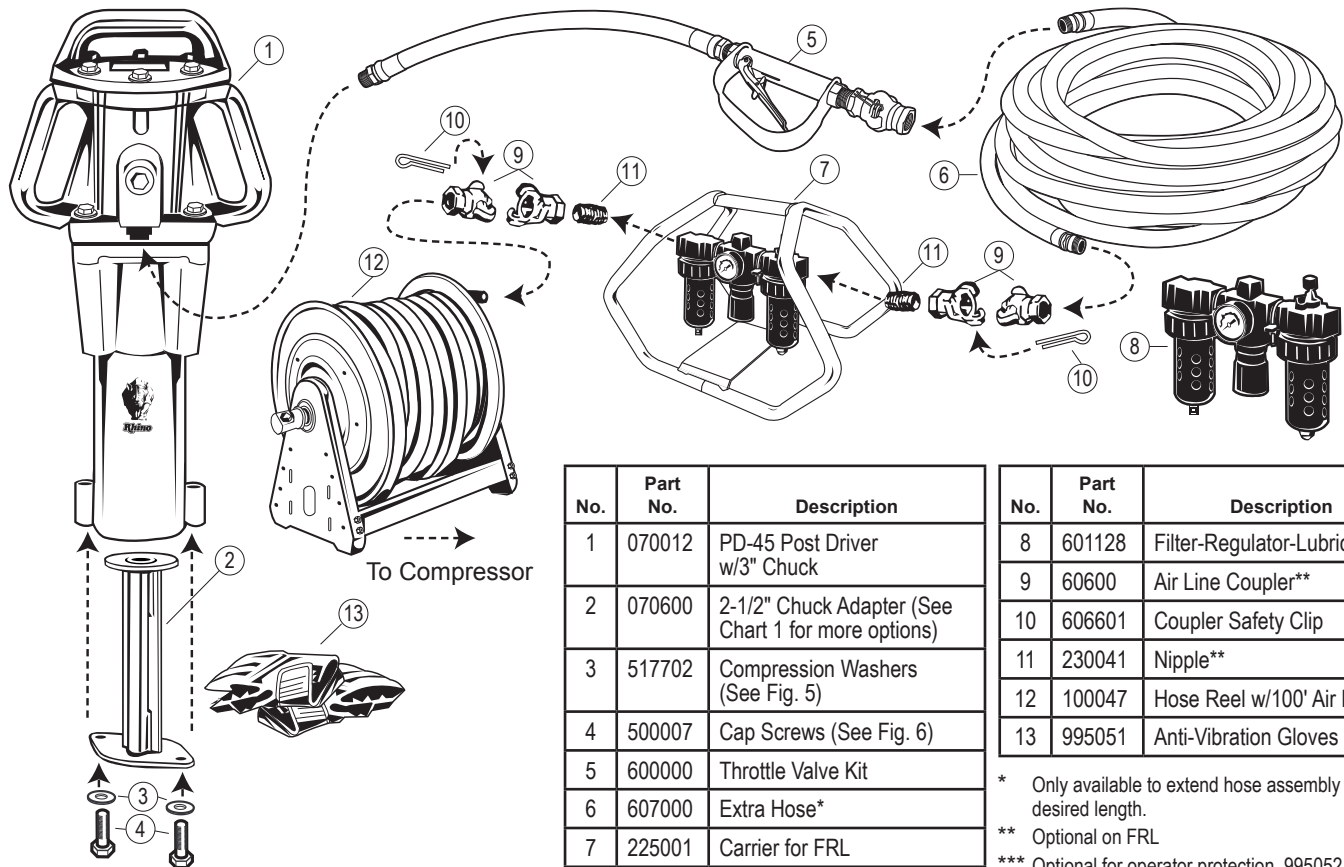
**Chart 1** - Master chuck and chuck adapter sizes and part numbers.

*Select the proper Chuck I.D. or Shape then order the part number under your post Driver's Model Number.*



**Fig. 1** - How to measure post to specify the appropriate chuck or chuck adapter





**Fig. 2 - Connecting PD-45 to a post driving system.**

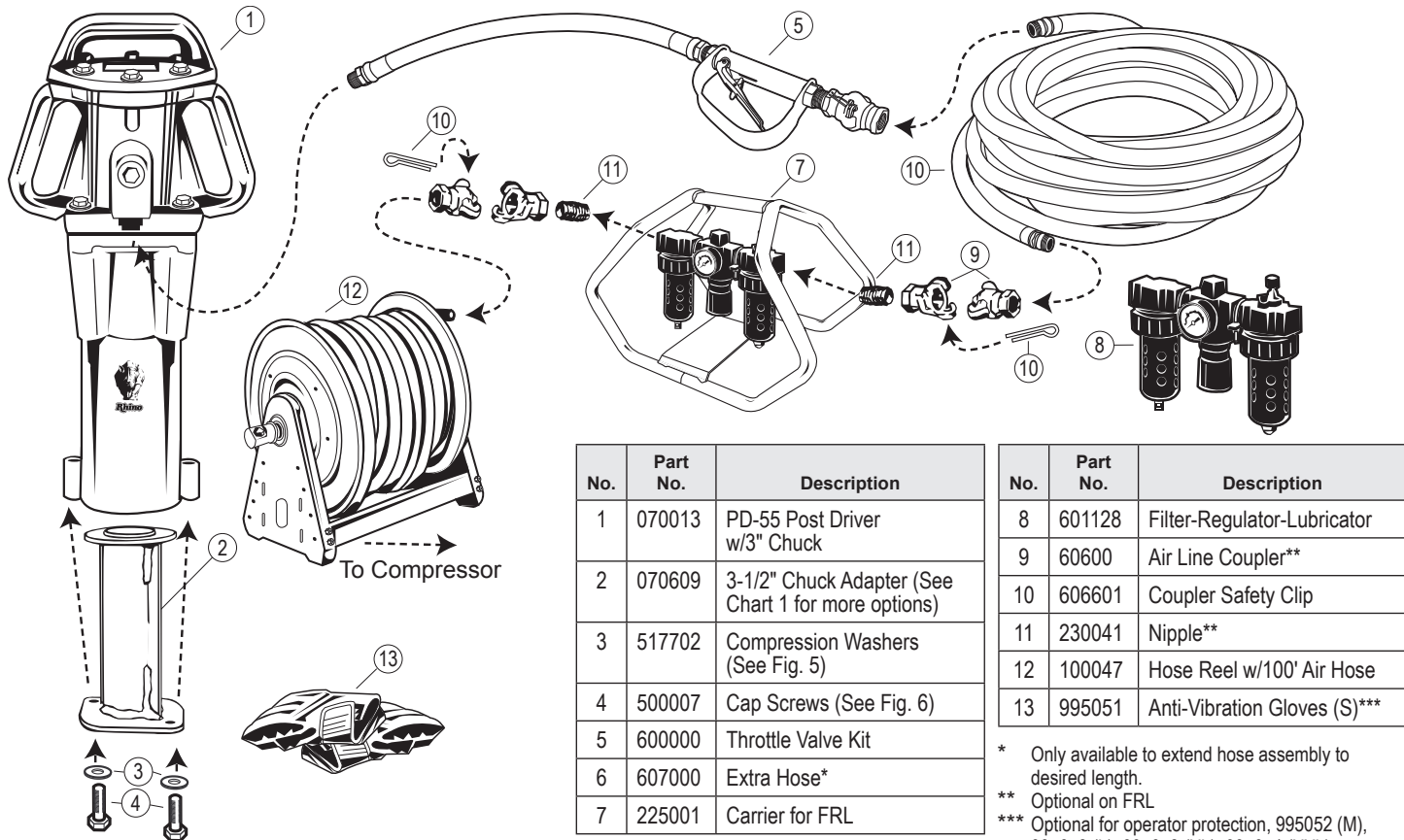
No.	Part No.	Description
1	070012	PD-45 Post Driver w/3" Chuck
2	070600	2-1/2" Chuck Adapter (See Chart 1 for more options)
3	517702	Compression Washers (See Fig. 5)
4	500007	Cap Screws (See Fig. 6)
5	600000	Throttle Valve Kit
6	607000	Extra Hose*
7	225001	Carrier for FRL

No.	Part No.	Description
8	601128	Filter-Regulator-Lubricator
9	60600	Air Line Coupler**
10	606601	Coupler Safety Clip
11	230041	Nipple**
12	100047	Hose Reel w/100' Air Hose
13	995051	Anti-Vibration Gloves (S)***

\* Only available to extend hose assembly to desired length.

\*\* Optional on FRL

\*\*\* Optional for operator protection, 995052 (M), 995053 (L), 995053 (XL), 995054 (XXL)



**Fig. 3 - Connecting PD-55 to a post driving system.**

# Rhino® PD-45/PD-55 General Operating Instructions

It is very important to understand that your post driver is a very powerful machine. With proper care and maintenance, your Rhino® PD-45 and PD-55 will give you many years of trouble free service. You must read and understand your post driver operating instructions before using the post driver. It is also very important that you make sure all operators are trained to operate your post driver safely.

Visually inspect your post driver before use. The interior of the chuck tube should be checked for obstructions or damage to the chuck tube. The outer surfaces of the driver should also be inspected for any defects. Do not use if there is any damage or until the damage is corrected and repaired.

Keep the post driver lubricated per manufacturer's specifications.

1. Blow out air lines before coupling them to your post driver.

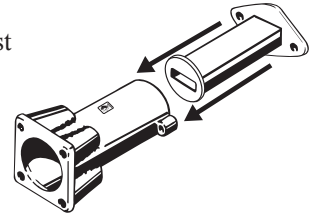
This precaution will help remove any dirt that may have entered an open hose.



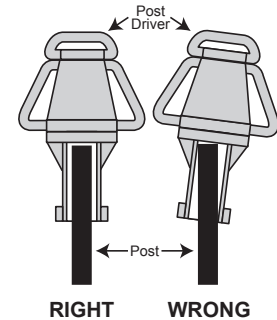
**CAUTION** Do not turn on pressurized air through an unsecured air line; the air line could whip around causing serious injury.

2. Check your Filter-Regulator-Lubricator. Make sure the regulator is set at no more than 90 PSI (6.4 kg/cm<sup>2</sup>). See **WARNING: AIR PRESSURE** on page 1 for instructions. Make sure the bowl has been drained and the lubricator filled with the proper weight oil. See **LUBRICATION** on page 2.

3. Do not use a chuck or chuck adapter that is too large for the post being driven. See **WARNING: CHUCK SIZING**, on page 2 for instructions. If the fit is too loose it is not safe to operate the driver, damage may occur to the driver and the driver may batter the end of the post.



4. Place the driver on the post to be driven. Position the driver (**Fig. 4**) aligned centered to the post. If not aligned properly, damage could be caused to the driver or the post. Slowly squeeze the air throttle valve lever to start the driver. Opening the throttle valve slowly will prevent a violent start of the driver. Never tape, wire, etc., the throttle valve lever open.



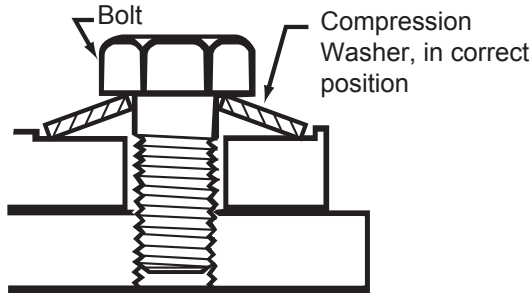
**Fig. 4** - Proper alignment of driver and post.

## AIR REQUIREMENTS

**PD-45: 30 CFM (0.85 m<sup>3</sup>/min.) @ 90 PSI (6.4 kg/cm<sup>2</sup>)**

**PD-55: 42 CFM (1.19 m<sup>3</sup>/min.) @ 90 PSI (6.4 kg/cm<sup>2</sup>)**

- Keep dirt out of the chuck. It could enter the unit causing damage. If dirt gets into the chuck, disconnect the driver from the air supply, remove the chuck and clean out the dirt. Be careful to keep dirt out of the driver during reassembly and be sure the bolts holding the chuck are tight and properly torqued.



**Fig. 5** - Proper installation of compression washer and bolts.

Make certain the surfaces are free of dirt, oil and grease. It is important to install compression washers properly or they will not lock the bolt securely. Place the compression washer with the center of the cone next to the bolt head being tightened (See **Fig. 5**). Then tighten the bolt with a torque wrench until the proper torque for the size of bolt being tightened is reached (See **Fig. 6**). Check bolt tightness daily.

**If you are driving the same temporary posts time after time, the posts will tend to fill with dirt after a few drives. The dirt may be pumped out the top of the post into your driver. Rhino Tool Company suggests you pinch the lower end of the post together, which will keep the dirt out.**

There are several benefits to doing this. It will decrease the weight of your temporary post stock by hundreds of pounds making it easier to handle the posts, it eliminates the mess of dried dirt falling out of the posts and eliminates hundreds of pounds of extra weight being hauled time and again by your trucks and trailers which saves you fuel.

Bolt Torque Chart		
Thread Size	Maximum Torque Ft. Lbs.	
(Grade 5)	Dry	Lubed
7/16-14 UNC	49	37
1/2-13 UNC	75	57
3/8-16 UNC	31	23

**Fig. 6** - Proper bolt torque. Refer to the data in the above chart when reconnecting the chuck to the driver after cleaning out dirt or foreign materials from inside the chuck.

# Rhino® PD-45/PD-55 Service Instructions

Following the service requirements for the PD-45 and PD-55 will insure years of trouble free post driving.

**⚠ WARNING** Before any service is preformed ensure that the unit is disconnected from air supply and not under pressure.

## Each Use:

1. Drain the water from the air compressor reservoir.
2. Ensure the air pressure setting on the FRL is correct.
3. Check oil level on the FRL and fill when needed.

**NOTE** Please see the instructions in the Rhino® FRL owners manual for the FRL operation.

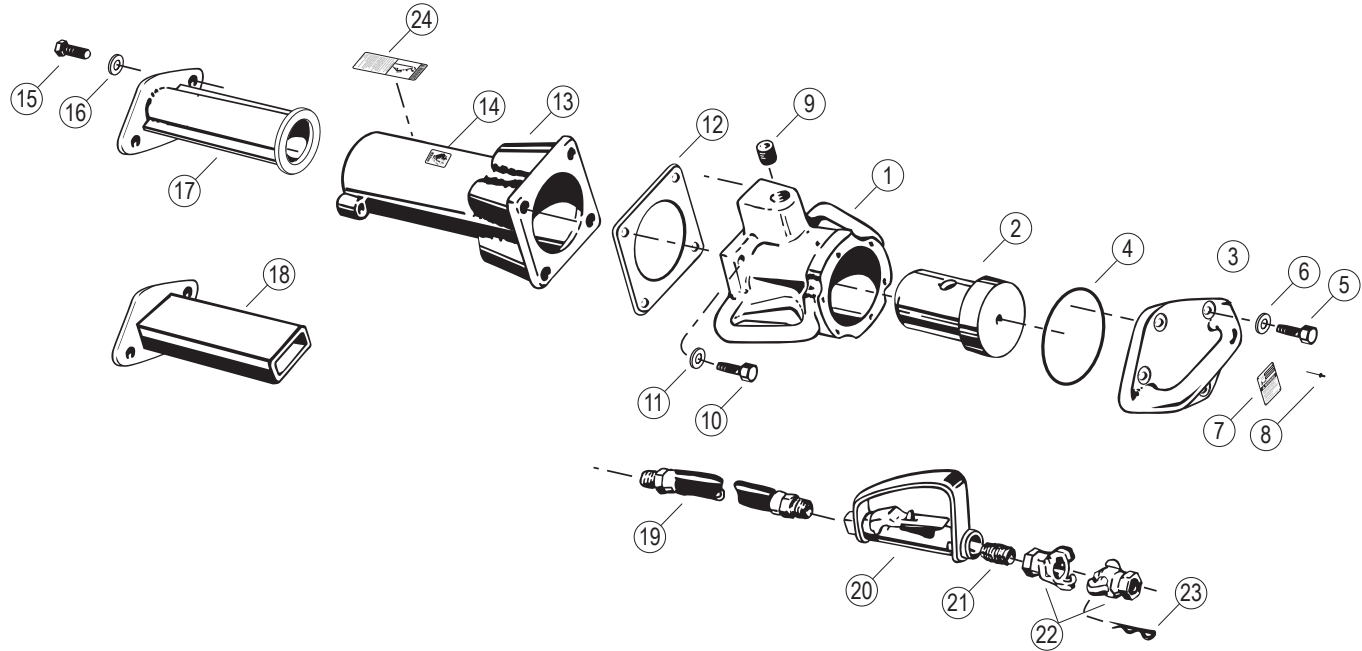
## Routinely:

1. Drain the filter stage of the FRL regularly, especially in winter. As needed clean the air filter element.
2. Check the bolts on your post driver to make sure they are tight. (See **Fig. 6**) Do not over torque the bolts.
3. If you suspect the piston is not moving freely, disassemble the driver, inspect the piston and inside wall of the cylinder for galling. If evident, call Rhino Tool Company for assistance. If no damage is apparent, carefully insert the piston and position the driver body on its side. By hand, cycle the driver's piston back and forth while rotating slightly to make sure it

is not binding. Listen closely for scratching, and watch the inside wall of the cylinder for abrasion from the piston. If a new scratch appears, mark the location on the piston with a felt tipped marker. Carefully remove the piston, inspect the side aligned to the mark for nicks and use emery cloth to smooth out raised edges that are evident. Carefully reinsert the piston and repeat this process to ensure abrading is eliminated. Then reassemble and torque bolts accordingly. (see **Fig. 6**)

4. When storing the post driver for prolonged periods, add extra oil into the air inlet of the post driver. Slowly roll the driver over to allow the oil to coat all inside surfaces, then stand the driver upright, to allow any condensation to drain.
5. Immediately replace any damaged parts with new. If the driver is not performing properly, contact Rhino or your Rhino representative. If the problem with your Rhino unit, any part or accessory is undetermined, contact Rhino Tool Company to obtain a "Return Goods Authorization" number (RGA), then send it freight prepaid to Rhino. Include your serial number if warranty is still in place. We will conduct a free examination to confirm what is wrong, advise you if unit can be repaired, and any costs to be incurred.
6. If warning labels are damaged, contact Rhino to receive free replacement labels.

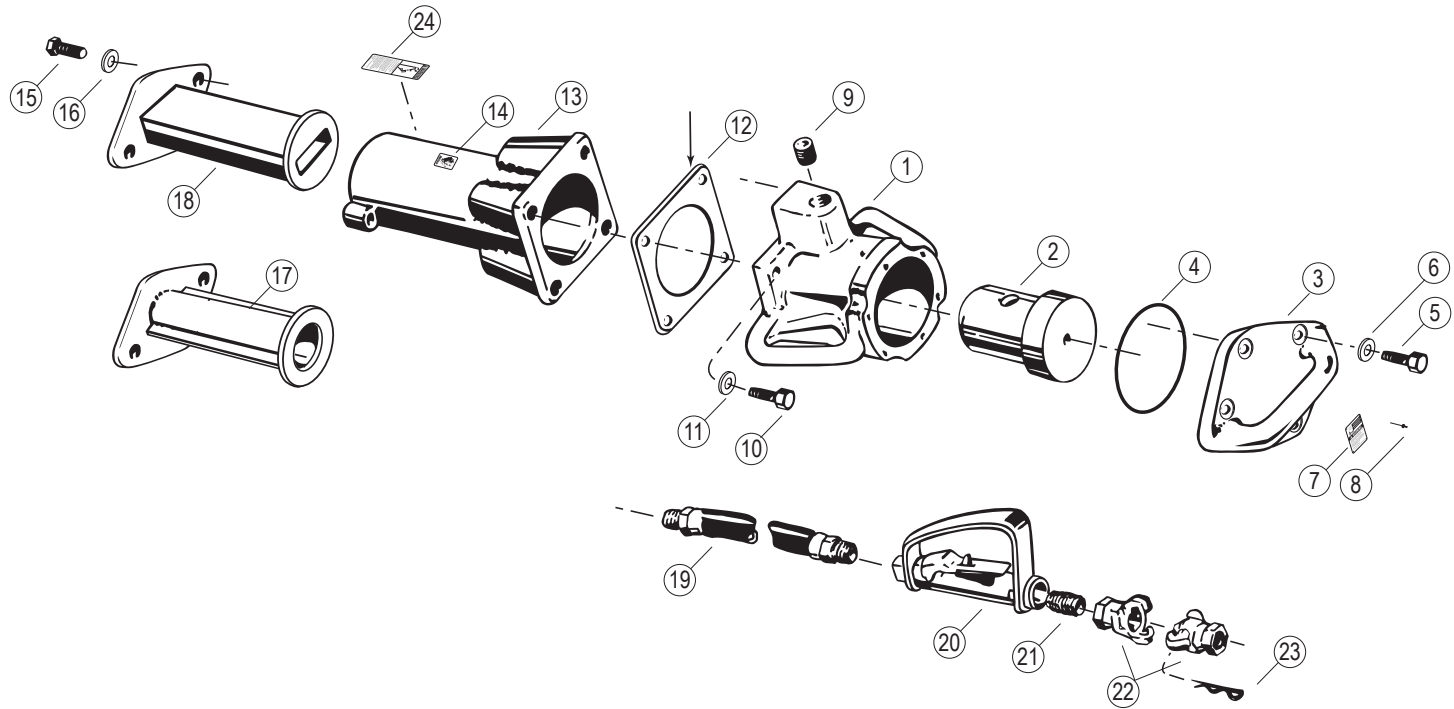
# Rhino® PD-45 Driver Parts List



# Rhino® PD-45 Driver Parts List

Number	Part No.	Name	Number	Part No.	Name
	070012	Model PD-45 with 3" (76.2 mm) I.D. Master Chuck	15	500178	Cap Screw (2 w/optional adapter)
1	070096	Body	16	517702	Compression Washer (2 per driver)
2	070023	Piston	17	070600	(Optional) 2 1/2" (63.5 mm) I.D. Chuck Adapter**
3	070097	Top Cover	18	070606	(Optional) Channel Post Chuck Adapter**
4	499402	O-ring		600000	Throttle Valve Kit w/ 5 ft. Hose Assembly ***
5	500082	Cap Screw (6 per driver)	19	607000	3/4" (19 mm) Hose Assembly
6	517696	Compression Washer (6 per driver)	19	605006	3/4" (19 mm) Hose Per Foot (Order Length Needed)
7	235	Model/Serial No./Warning Plate	20	610026	Throttle Valve with Lever Guard
8	519004	Metal Tack (4 per driver)	21	610024	Screen Fitting
9	230400	Pipe Plug	22	606600	Coupler (2 per driver)
10	500178	Cap Screw (4 per driver)	23	606601	Safety Clip
11	517702	Compression Washer (4 per driver)	24	244	Warning Label
12	700007	Gasket			* Includes number 10, 11, 12, 13, 14, 24
13	070591	3" (76.2 mm) I.D. Master Chuck Assembly*			** See pages 4—6 for specifying Chuck Adapter to your application
14	135	Rhino Decal			*** Includes number 19, 20, 21, 22, 23

# Rhino® PD-55 Driver Parts List





# Rhino® PD-55 Driver Parts List

Number	Part No.	Name	Number	Part No.	Name
	070013	Model PD-55 with 3-7/8" (98.4.2 mm) I.D. Master Chuck	15	500178	Cap Screw (2 w/optional adapter)
1	070580	Body	16	517702	Compression Washer (2 per driver)
2	070034	Piston	17	070609	3 1/2" (88.9 mm) I.D. Chuck Adapter**
3	070581	Top Cover	18	070617	Channel Post Chuck Adapter**
4	499401	O-ring		600000	Throttle Valve Kit w/ 5 ft. Hose Assembly ***
5	500021	Cap Screw (6 per driver)	19	607000	3/4" (19 mm) Hose Assembly
6	517705	Compression Washer (6 per driver)	19	605006	3/4" (19 mm) Hose Per Foot (Order Length Needed)
7	235	Model/Serial No./Warning Plate	20	610026	Throttle Valve with Lever Guard
8	519004	Metal Tack (4 per driver)	21	610024	Screen Fitting
9	230400	Pipe Plug	22	606600	Coupler (2 per driver)
10	500178	Cap Screw (4 per driver)	23	606601	Safety Clip
11	517702	Compression Washer (4 per driver)	24	244	Warning Label
12	700001	Gasket			* Includes number 10, 11, 12, 13, 14, 24
13	070592	3" (76.2 mm) I.D. Master Chuck Assembly*			** See pages 4—6 for specifying Chuck Adapter to your application
14	135	Rhino Decal			*** Includes number 19, 20, 21, 22, 23

# Rhino® Limited Warranty

## Air Operated Post Drivers

**Warranty:** RHINO TOOL COMPANY warrants to the original purchaser for a period of thirty (30) days from the date of purchase that its Air Operated Post Driver is free from defects in manufacture and materials. In the event of a manufacturing defect during the Warranty period, the Post Driver must be returned freight prepaid to RHINO TOOL COMPANY. If inspection shows a defect in material or workmanship, RHINO will repair or replace without charge.

**Exclusive Remedy:** The sole and exclusive remedy under this Warranty is repair or replacement of the product by RHINO TOOL COMPANY.

**Disclaimer:** In no event shall RHINO TOOL COMPANY be liable for indirect, incidental or consequential damages arising from the sale or use of this product, at any time. RHINO TOOL COMPANY disclaims liability for any implied warranties, including implied warranties of “Merchantability” and “Fitness for a Specific Purpose”.

**Limitation:** This Warranty **DOES NOT APPLY** to the physical appearance of any product or to any product that has been misused, abused, improperly maintained, altered or repaired by unauthorized persons, or to repairs required by normal wear and tear.

**Extended:** The purchaser may extend the original LIMITED WARRANTY above to **ONE YEAR** from the date of purchase, by registering the equipment with **RHINO TOOL COMPANY WITHIN THIRTY (30) DAYS OF DATE OF PURCHASE.**

**Transferability:** The above Limited Warranty is non-transferable.

### IMPORTANT

Instructions for obtaining optional extended warranty:

You must complete your Owner Registration by filling out the on-line warranty form within thirty (30) days of purchase.

Rhino will confirm your extended warranty after receiving your online submission or Owner Registration Card.

**To register your product online visit:**

<http://rhinopostdrivers.com/contact-support/warranty-information/>

# Air Operated Post Driver Trouble Shooting

Symptom	Explanation/Procedure
<b>Post lodged in the driver</b>	In the event that a driven post flares and becomes lodged within the chuck, follow these steps: <ol style="list-style-type: none"><li>1. Remove the 2 bolts that secure the adapter and separate the driver from the adapter.</li><li>2. Slide the adapter down the post to expose the top of the post. With the proper cutting tool for the type of post, cut through the post below the flared portion.</li><li>3. Once the deformed portion is removed, slide the adapter off the post and reassemble it to the driver. Please follow bolt tightening procedure.</li></ol>
<b>Drives post slow or sluggish performance</b>	<ol style="list-style-type: none"><li>1. Inspect the chuck to see if there is any foreign material blocking the piston.</li><li>2. Check to see if piston is moving freely by disconnecting the driver from air, tipping upside down and back upright. You should be able to hear the piston moving freely.</li><li>3. Check to ensure the rate of lubrication is adequate.</li><li>4. Inspect the filter on the FRL, if impacted with residue replace with new filter.</li><li>5. Inspect the filter on the Throttle. If clogged, blow off debris with air hose, or clean with a common cleaning solvent.</li><li>6. Check to see if air pressure is correct</li><li>7. Check output on compressor</li><li>8. In temperatures under 40°F (4°C) or high humidity conditions check air lines and tool for icing.</li></ol>
<b>Noticeable air passing through driver or “blow by”</b>	To confirm this condition exists, connected to air source, place driver on a post, while activating the throttle lift the driver slightly if the piston increases in activity blow by is confirmed. This indicates there is most likely damaged or worn parts inside the driver. In this event the driver should be sent to Rhino Tool Company to be inspected and we will report if the driver is repairable.
<b>Other problems or technical questions</b>	Have your serial number handy and contact Rhino Tool Company. Phone: 309.853.5555 or Toll Free 866-707-1808, Fax:309.856.5905, Email: <a href="mailto:info@rhinotool.com">info@rhinotool.com</a>

# Manufacturing Quality Post Drivers and Post Pullers Since 1977



Drive Home a  
**RHINO**<sup>®</sup>  
T O D A Y



© 2013 Rhino Tool Company



Jamieson Equipment Company  
5314 Palmero Court  
Buford, GA 30518  
800.875.0280  
[www.jamiesonequipment.com](http://www.jamiesonequipment.com)