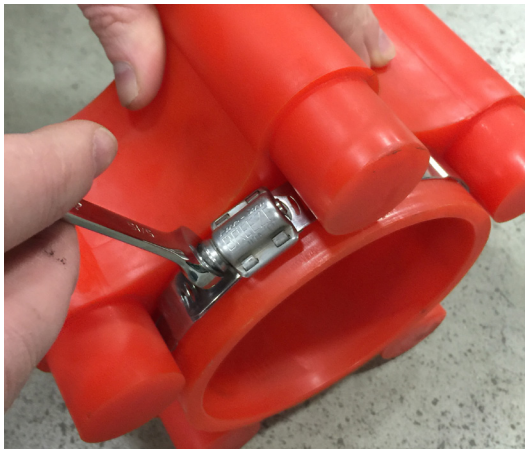




EASILY SLIDE DISC ONTO RETURN ROLLER



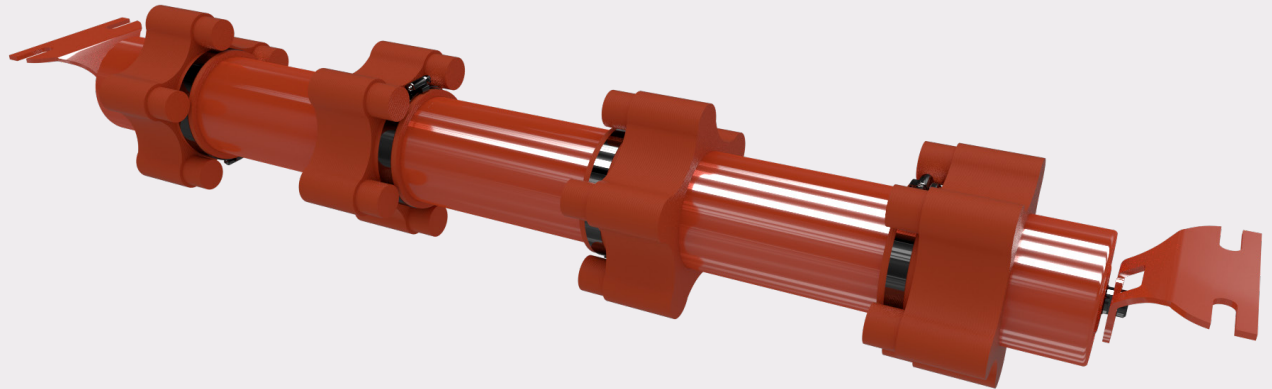
STANDARD HOSE CLAMP SECURES DISC

### QUICK SPECS

Classes: CEMA C and D

Roll Diameter: 4", 5" and 6"

Belt Widths: 18" to 60"



# URATHON® BEATER ROLLS

Cost-Effectively Shake Off Carryback Material

- **Economical method** of removing carryback material from bottom of belting.
- Maintenance free lobed discs cause light vibration to **dislodge material from belting**.
- Ideal installation is above stockpile, screen or bin so **material hits discharge target**.
- Purchase as **individual urethane discs** or complete idler with pre-assembled discs.



# SPECIFICATIONS

## CEMA C SPECIFICATIONS (PRE-ASSEMBLED DISCS AND IDLER)

Roll Diameter			Belt Width (Inches)	Number of Discs	Total Assembly Weight (lbs)			Lobed Disc Installation (inches) see illustration below		
4"	5"	6"			4"	5"	6"	A	B	C
C4-RETUB-18	C5-RETUB-18	C6-RETUB-18	18"	2	20	26	33	4"	3.5"	6-1/4"
C4-RETUB-24	C5-RETUB-24	C6-RETUB-24	24"	2	24	30	42			12-1/4"
C4-RETUB-30	C5-RETUB-30	C6-RETUB-30	30"	3	29	37	48			7-1/2"
C4-RETUB-36	C5-RETUB-36	C6-RETUB-36	36"	3	32	42	56			10-1/2"
C4-RETUB-42	C5-RETUB-42	C6-RETUB-42	42"	4	37	47	63			7-3/4"
C4-RETUB-48	C5-RETUB-48	C6-RETUB-48	48"	4	38	54	69			9-3/4"
C4-RETUB-54	C5-RETUB-54	C6-RETUB-54	54"	4	48	60	80			11-3/4"
C4-RETUB-60	C5-RETUB-60	C6-RETUB-60	60"	5	53	68	87			9-1/2"

## CEMA D SPECIFICATIONS (PRE-ASSEMBLED DISCS AND IDLER)

Roll Diameter			Belt Width (Inches)	Number of Discs	Total Assembly Weight (lbs)			Lobed Disc Installation (inches) see illustration below		
4"	5"	6"			4"	5"	6"	A	B	C
D4-RETUB-18	D5-RETUB-18	D6-RETUB-18	18"	2	20	28	36	4"	3.5"	6-1/4"
D4-RETUB-24	D5-RETUB-24	D6-RETUB-24	24"	2	25	33	45			12-1/4"
D4-RETUB-30	D5-RETUB-30	D6-RETUB-30	30"	3	30	41	52			7-1/2"
D4-RETUB-36	D5-RETUB-36	D6-RETUB-36	36"	3	34	46	60			10-1/2"
D4-RETUB-42	D5-RETUB-42	D6-RETUB-42	42"	4	38	52	67			7-3/4"
D4-RETUB-48	D5-RETUB-48	D6-RETUB-48	48"	4	42	57	74			9-3/4"
D4-RETUB-54	D5-RETUB-54	D6-RETUB-54	54"	4	46	62	82			11-3/4"
D4-RETUB-60	D5-RETUB-60	D6-RETUB-60	60"	5	51	69	91			9-1/2"
D4-RETUB-72	D5-RETUB-72	D6-RETUB-72	72"	5	59	80	105	12-1/2"		

### INDIVIDUAL LOBED DISCS

Part Number	Description	Outside Diameter
09-000018	4" Lobed Disc	7.2"
09-000019	5" Lobed Disc	8.2"
09-000020	6" Lobed Disc	9.2"

