

MIDWEST PARAGON™ SERIES MANUALLY OPERATED SLIDING KNIFE GATES

NOTES: 1. CLASS OF CONSTRUCTION AVAILABLE FOR LINERS
(IA, II, III AND V REFER TO CHART)

OPTIONAL

2. GATE FRAME CONSTRUCTION

4.00 [102] 7.25# FT

6.00 [152] 10.5# FT

STRUCTURAL A36 CARBON STEEL CHANNEL (STANDARD)

3. MIDWEST EXCLUSIVE STAINLESS STEEL CAM ROLLER ECCENTRICS
STANDARD TO KEEP STAINLESS STEEL BLADE PRESSED
TIGHTLY AGAINST UNDERSIDE OF POLYETHYLENE
OR EURATHANE SEAL

4. CLASS OF CONSTRUCTION AVAILABLE
FOR GATE FRAMES, BLADES, LINERS AND
DUST SEALED TRANSITION. (REFER TO CHART)
(STANDARD GATE BLADE CONSTRUCTION
CLASS III 304 SS, 316L AVAILABLE)

CLASS I: NOT APPLICABLE

IA: CARBON MILD STEEL A36 CHANNEL FRAME. (STANDARD)

II: CLASS IA FRAME AND 250 BHN (AR) BLADE.

III: 304 STAINLESS STEEL CHANNEL FRAME (316 SS AVAILABLE).

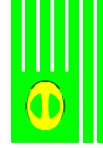
IIIA: ALL 304 STAINLESS STEEL CONSTRUCTION (316 SS AVAILABLE).

IV: HIGH TEMPERATURE (400F) NON METALLIC COMPONENTS.

V: CLASS IA FRAME AND 400 BHN (AR) BLADE

VA: ROCK BOX 400 BHN INSTALLED IN (NSP) TRANSITION
AVAILABLE, CONSULT FACTORY.

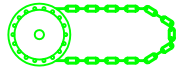
PAINT: 3 MILS WHITE EPOXY STANDARD (OTHER PAINT SYSTEMS AVAILABLE)



AN AIR ECOLOGY COMPANY

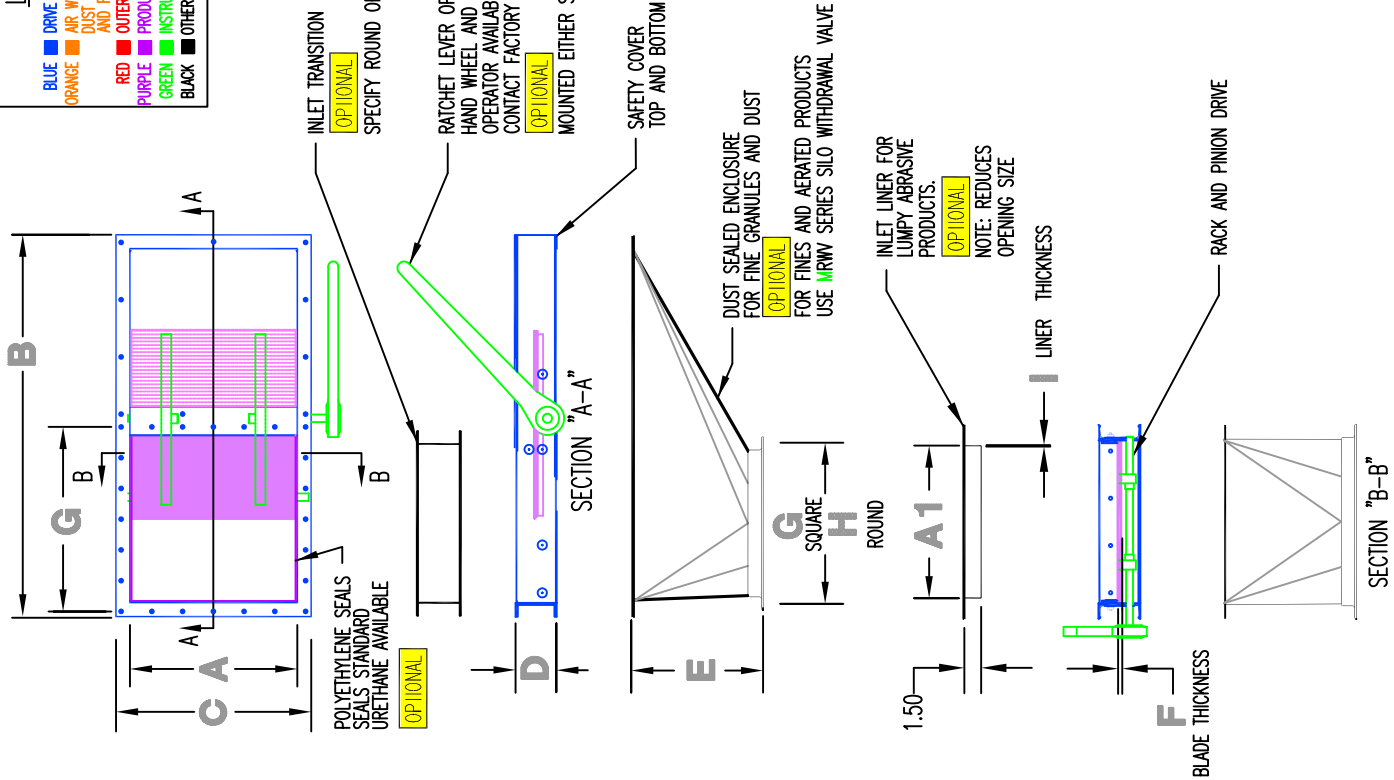


HAND WHEEL
OPTIONAL



CHAIN WHEEL
OPTIONAL

LEGEND	
BLUE	DRIVE COMPONENTS
ORANGE	AIR WITHDRAWAL i.e. FANS, DUST OUTLETS, DUST PIPING AND FLEXIBLE OUTER SPOUT
RED	OUTER SCAVENGER
PURPLE	PRODUCT FLOW AREA
GREEN	INSTRUMENTATION AND UTILITIES
BLACK	OTHER



MIDWEST MODEL	MOC	SPROUT APPLICATION	NOMINAL PRODUCT IN/OUT		ACTUAL OPENING WITH LINER		LENGTH	
			IN	MM	IN	MM	IN	MM
250	IB 16	10	254	8.50	216	28.62	727	
300	IC 22	12	305	10.50	267	31.76	807	
350	ID 30	15	381	13.50	343	37.76	959	
450	IE 36	18	457	16.50	419	43.76	1112	
550	IF 42	22	559	18.00	457	51.76	1315	
600	IG 50	24	610	22.00	559	55.91	1420	
750	N/A	30	762	28.00	711	71.16	1807	
900	IH 72	36	914	34.00	864	83.16	2112	
1200	II 96	48	1219	46.00	1188	107.16	2722	

MIDWEST MODEL	MOC	WIDTH	FRAME ENCLOSURE HEIGHT		BLADE THICKNESS		SQUARE BOLT PATTERN SPACE		TOTAL HOLE SIZE		ROUND BOLT PATTERN HOLE SIZE		BOLT CIRCLE OUTLET DIA		LINER THICKNESS AVAILABLE		WEIGHT LBS. KG					
			IN	MM	IN	MM	IN	MM	IN	MM	NO.	IN	MM	NO.	IN	MM		IN	MM			
250	13.44	341	4	102	13	330	3.75	9.5	2	6.06	154	12.12	308	6	9.43	239	8	203	113	51		
300	15.44	392	4	102	13	330	3.75	9.5	4	4.28	109	17.12	435	8	17.00	431	15	381	250	6.4	137	62
350	18.44	468	4	102	13	330	3.75	9.5	4	5.03	128	20.12	511	10	24.50	508	18	457	375	9.5	190	86
450	21.44	545	5	125	14.5	368	5.0	12.7	6	6.12	155	24.5	622	12	26.50	673	24	610	500	12.7	331	150
550	26.07	662	6	152	17.5	445	5.0	12.7	6	5.42	137	32.5	826	17	38.50	978	36	914	547	24.8	547	248
600	28.07	713	6	152	18.5	470	5.0	12.7	8	6.42	163	38.5	978	24	50.50	1283	48	1219	705	320	705	320
900	40.07	1018	6	152	25.5	648	5.0	12.7	8	6.31	160	50.5	1283	24	50.50	1283	48	1219	1261	572	1261	572

△ (LINERS ADD .125/3mm TO FRAME HEIGHT).



Operational Headquarters
Midwest Plaza, 105 Stover Rd.
Charlevoix, Michigan 49720
Phone (231) 547-4000
Fax (231) 547-9453

REF.
SERIAL NO.
JOB NO.
SHEET NO.
DRAWING NO. 7002-A

PREPARED FOR:
P.O. NO.
TITLE: SLIDING KNIFE GATES
DRAWN: KC DATE: 07 FEB 00

DATE:
CHECKED: RP/REM

This drawing and/or publication represents proprietary article and the designs, trade names or trademarks therein are either patented, have patents pending or are copyrighted internationally. Information appearing on this document remains the property of Ron Pair Enterprises, Inc. and is not to be reproduced without written authorization from an officer of this corporation.

REVISION
NO. DATE: