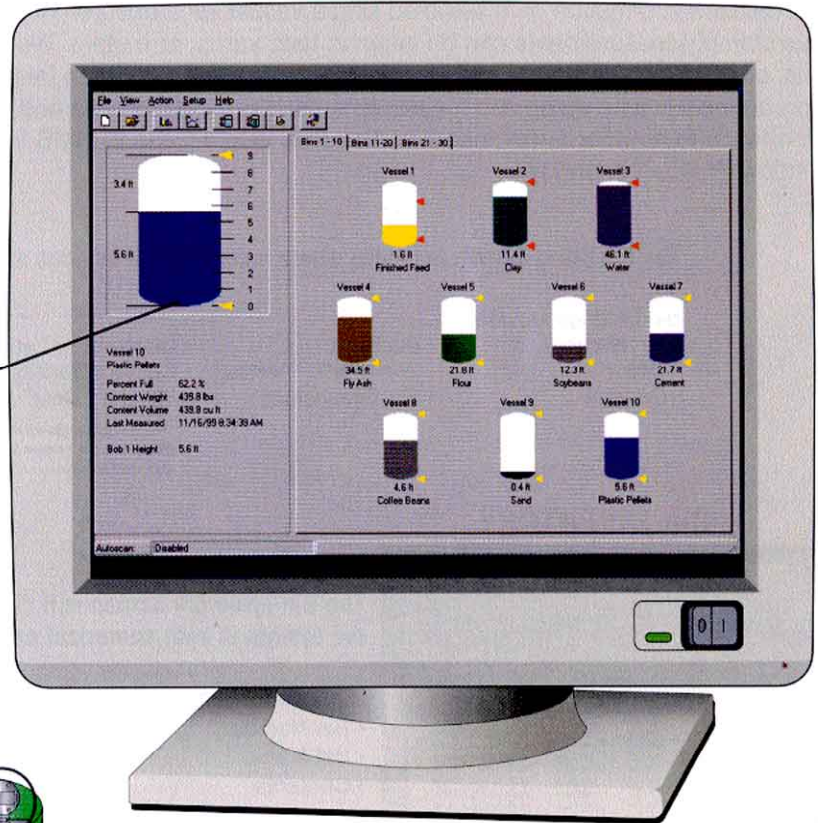


IMS

Inventory Management Software

**Providing PC Based
Inventory Management**

MAIN SCREEN



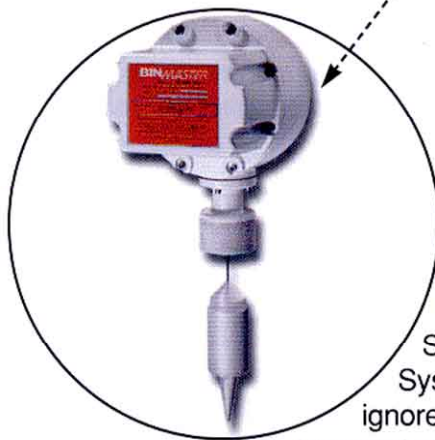
Provides a graphical representation of 10 vessels per tab, plus detailed inventory information on a single vessel.

Left Click on Vessel Will Display Detail that Includes:

- Vessel Number
- Content Volume
- Product
- Last Measured Date and Time
- Percent Full
- Height of Product
- Content Weight
- Distance to Product

Right Click on Vessel Allows You to Choose One of the Following:

- Measure the Vessel
- Remove the Bin
- Retrieve Level History
- Bob Diagnostics
- Settings: Configuration, Bobs, Alarms and Display



The IMS interfaces with the advanced microprocessor based SmartBob Remote Sensors. The SmartBob System completely ignores dust, echo, vapors, temperature, steam, or material densities. It is capable of measuring all your liquid, slurry, or powder and dry bulk solid applications.

BINMASTER
Taking Control . . . To A Higher Level

Windows Compatible Inventory Management Software

BinMaster's new Windows™ compatible Inventory Management Software (IMS) interfaces with our SmartBob Remote Sensors to monitor material level in up to 90 vessels. The powerful software provides a graphical representation of ten vessels per tab and detailed information on a selected single vessel. All measurements are saved in a comma-delimited file with a time and date stamp. Measurements can be taken in feet, yards, or meters. Weight can be calculated in pounds, kilograms, tons, metric tons, or slugs. Bin inventory and level history is displayed in graph form and can be printed at any time. This system can be programmed to take automatic measurements at pre-set intervals and, in the event of an alarm, allows you to send vital information to a pager or fax machine. You may also access the IMS from remote locations. The program is compatible with Windows™ '95, '98, and NT.

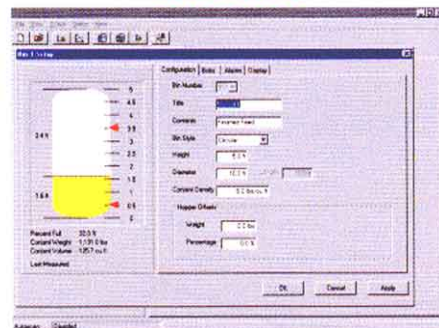
The Bin Setup Screen indicates where individual bin settings are recorded.

Bin Settings Include:

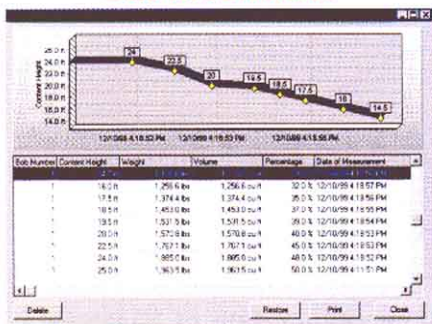
- Bin Number
- Bin Style (circular or rectangular)
- Bin Dimensions
- Diameter or Length
- Content Density
- Hopper Offset* (weight and percentage)

*Hopper offset allows the weight and percentage of material in the hopper bottom to be added into the total calculation.

BIN SETUP



BIN INVENTORY



The Bin Inventory Screen will display inventory for each individual vessel on the system in both numerical and graph form. Information can be printed.

Bin Inventory Includes:

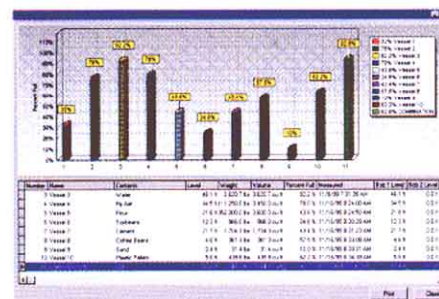
- Bin Number
- Bin Name
- Contents
- Level
- Weight
- Volume
- Percent Full
- Date/Time Measured

The Level History Screen will display inventory history for every vessel on the system in both a numerical and graph form. Information can be printed.

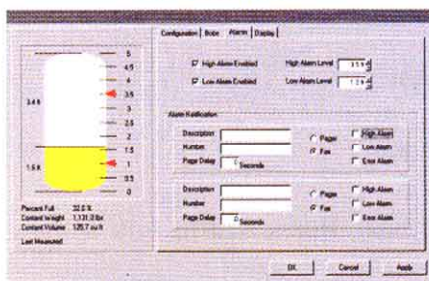
Inventory History Includes:

- Bin Number
- Bob Number
- Content Height
- Volume
- Weight
- Percent Full
- Date/Time of Measurement

LEVEL HISTORY



BIN ALARMS



The Bin Alarm Screen provides a programmable high, low, and error alarm that can be programmed to access the computer's modem and dial a preset emergency number.

Alarm Setting Includes:

- High Alarm Enabled/High Alarm Level
- Low Alarm Enabled/Low Alarm Level
- Alarm Notification Fax and/or Pager
- Alarm Notification Description
- Alarm Notification Number
- Page Delay
- Enabled High/Low/Error Alarms

BINMASTER
Taking Control... To A Higher Level

THE MOST COMPLETE INVENTORY MANAGEMENT SOFTWARE ON THE MARKET

- ✓ Auto Scan
- ✓ Programmable High/Low/Error Alarms
- ✓ Alarm Alerts Sent to Fax or Pager
- ✓ Remote Access
- ✓ Password Protected
- ✓ Saves All Measurements
- ✓ Controls Up to 90 Vessels
- ✓ Simple Operation
- ✓ Windows™ '95, '98, and NT Compatible