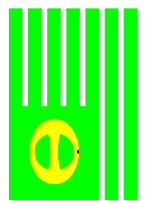
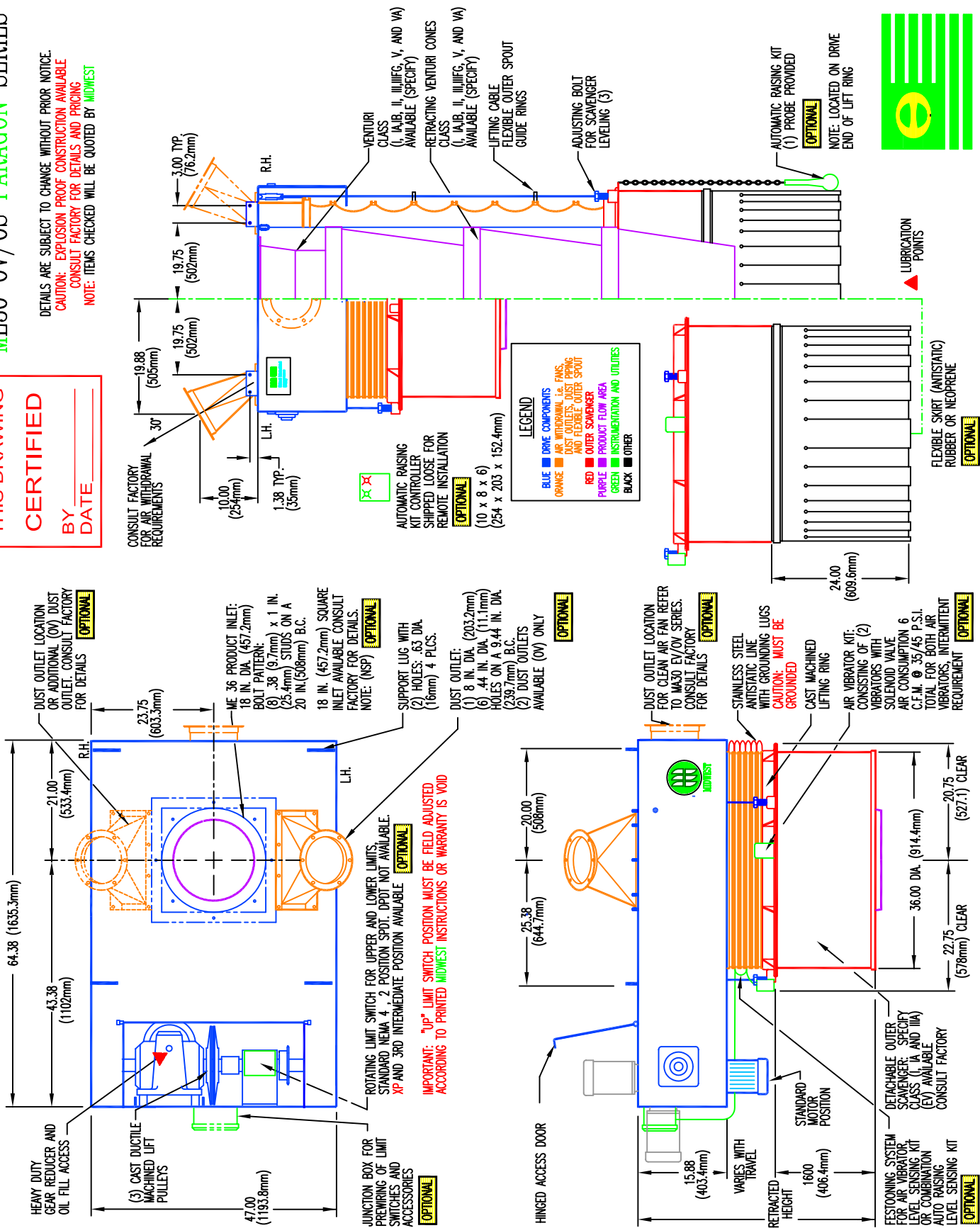


ME36 OV/OS PARAGON™ SERIES

**THIS DRAWING
CERTIFIED**
BY _____
DATE _____

DETAILS ARE SUBJECT TO CHANGE WITHOUT PRIOR NOTICE.
CAUTION: EXPLOSION PROOF CONSTRUCTION AVAILABLE
CONSULT FACTORY FOR DETAILS AND PRICING
NOTE: ITEMS CHECKED WILL BE QUOTED BY MIDWEST



AN AIR ECOLOGY COMPANY

DUST OUTLET LOCATION OR ADDITIONAL (OV) DUST OUTLET, CONSULT FACTORY FOR DETAILS [OPTIONAL]

ME 36 PRODUCT INLET: 18 IN. DIA. (457.2mm) BOLT PATTERN: (8) .38 (9.7mm) x 1 IN. (25.4mm) STUDS ON A 20 IN. (508mm) B.C.

18 IN. (457.2mm) SQUARE INLET AVAILABLE, CONSULT FACTORY FOR DETAILS. NOTE: (NSP) [OPTIONAL]

SUPPORT LUG WITH (2) HOLES: .63 DIA. (16mm) 4 PLCS. [OPTIONAL]

DUST OUTLET: (1) 8 IN. DIA. (203.2mm) (6) 44 IN. DIA. (11.1mm) HOLES ON A 9.44 IN. DIA. (239.7mm) B.C. (2) DUST OUTLETS AVAILABLE (OV) ONLY [OPTIONAL]

ROTATING LIMIT SWITCH FOR UPPER AND LOWER LIMITS. STANDARD NEMA 4, 2 POSITION SPDT. DPDT NOT AVAILABLE. XP AND 3RD INTERMEDIATE POSITION AVAILABLE. [OPTIONAL]

IMPORTANT: "UP" LIMIT SWITCH POSITION MUST BE FIELD ADJUSTED ACCORDING TO PRINTED MIDWEST INSTRUCTIONS OR WARRANTY IS VOID

DUST OUTLET LOCATION FOR CLEAN AIR FAN REFER TO M430 EV/OV SERIES. CONSULT FACTORY FOR DETAILS [OPTIONAL]

STAINLESS STEEL ANTISTATIC LINE WITH GROUNDING LUGS CAUTION: MUST BE GROUNDED [OPTIONAL]

CAST MACHINED LIFTING RING [OPTIONAL]

AIR VIBRATOR KIT: CONSISTING OF (2) VIBRATORS WITH SOLENOID VALVE. AIR CONSUMPTION 6 C.F.M. @ 35/45 P.S.I. TOTAL FOR BOTH AIR VIBRATORS. INTERMITTENT REQUIREMENT [OPTIONAL]

HEAVY DUTY GEAR REDUCER AND OIL FILL ACCESS

(3) CAST DUCTILE MACHINED LIFT PULLEYS

47.00 (1193.8mm)

21.00 (533.4mm)

23.75 (603.3mm)

64.38 (1635.3mm)

43.38 (1102mm)

R.H.

L.H.

JUNCTION BOX FOR LIMIT SWITCHES AND ACCESSORIES [OPTIONAL]

HINGED ACCESS DOOR

25.38 (644.7mm)

20.00 (508mm)

15.88 (403.4mm)

VARIES WITH TRAVEL

1600 (406.4mm)

STANDARD MOTOR POSITION

DETECTABLE OUTER SCAVENGER: SPECIFY CLASS (I, IA AND IIA) OR COMBINATION (EY) AVAILABLE. CONSULT FACTORY [OPTIONAL]

FESTOONING SYSTEM FOR AIR VIBRATOR LEVEL SENSING KIT (EY) AVAILABLE. CONSULT FACTORY [OPTIONAL]

22.75 (578mm) CLEAR

36.00 DIA. (914.4mm)

20.75 (527.1) CLEAR

LEGEND

- BLUE DRIVE COMPONENTS
- ORANGE AIR WITHDRAWAL, I.e. FANS, DUST OUTLETS, DUST PIPING AND FLEXIBLE OUTER SPOUT
- RED OUTER SUMP
- PURPLE PRODUCT FLOW AREA
- GREEN INSTRUMENTATION AND UTILITIES
- BLACK OTHER

VENTURI CLASS (I, IA, IB, II, III, IIFG, V, AND VA) AVAILABLE (SPECIFY)

RETRACTING VENTURI CONES (I, IA, IB, II, III, IIFG, V, AND VA) AVAILABLE (SPECIFY)

LIFTING CABLE FLEXIBLE OUTER SPOUT GUIDE RINGS

ADJUSTING BOLT FOR SCAVENGER LEVELING (3)

AUTOMATIC RAISING KIT (1) PROBE PROVIDED [OPTIONAL]

NOTE: LOCATED ON DRIVE END OF LIFT RING

LUBRICATION POINTS

FLEXIBLE SKIRT (ANTISTATIC) RUBBER OR NEOPRENE [OPTIONAL]



Operational Headquarters
Midwest Plaza, 105 Tower Rd.
Charlevoix, Michigan 49720
Phone (231) 547-4000
Fax (231) 547-9453

REF. SERIAL NO. JOB NO. SHEET NO. DRAWING NO. ME36OVA

PREPARED FOR: P.O. NO. DATE: TITLE: ME36-OV PARAGON SERIES RETRACTABLE BULK LOADING SPOUT FOR OPEN VEHICLES DRAWN: KC DATE: 07 FEB 00 CHECKED: RP/REM

This drawing and/or publication represents proprietary article and the designs, trade names or trademarks therein are either patented, have patents pending or are copyrighted internationally. Information appearing on this document remains the property of Ron Pair Enterprises, Inc. and is not to be reproduced without written authorization from an officer of this corporation.

REVISION	
NO.	DATE: