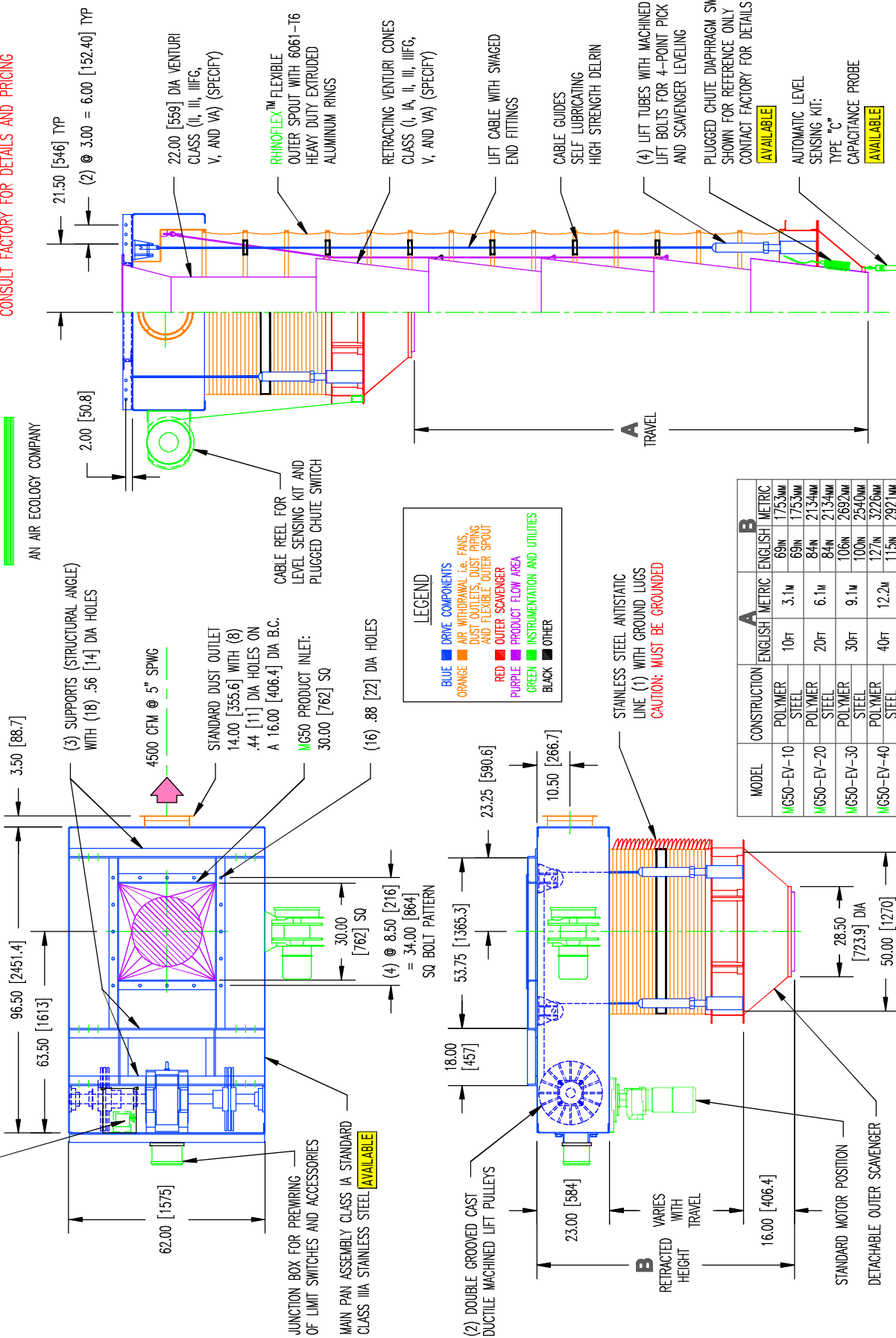


AN AIR ECOLOGY COMPANY

# MG50-EV PARAGON™ SERIES

DETAILS ARE SUBJECT TO CHANGE WITHOUT PRIOR NOTICE.  
**CAUTION: EXPLOSION PROOF CONSTRUCTION AVAILABLE.  
 CONSULT FACTORY FOR DETAILS AND PRICING**

ROTATING LIMIT SWITCH FOR UPPER AND LOWER LIMITS  
 STANDARD NEMA 4, 2 POSITION SPDT. DPDT NOT AVAILABLE  
**IMPORTANT: LIMIT SWITCH POSITIONS MUST BE FIELD  
 ADJUSTED ACCORDING TO PRINTED MIDWEST INSTRUCTIONS  
 OR WARRANTY IS VOID**



**LEGEND**

- BLUE ■ DRIVE COMPONENTS
- ORANGE ■ AIR WITHDRAWAL i.e. FANS, DUST OUTLETS, DUST PIPING AND FLEXIBLE OUTER SPOUT
- RED ■ OUTER SCAVENGER
- PURPLE ■ PRODUCT FLOW AREA
- GREEN ■ INSTRUMENTATION AND UTILITIES
- BLACK ■ OTHER

MODEL	CONSTRUCTION	A		B	
		ENGLISH	METRIC	ENGLISH	METRIC
MG50-EV-10	POLYMER	10ft	3.1m	69in	1753mm
MG50-EV-20	STEEL	20ft	6.1m	69in	1753mm
MG50-EV-30	POLYMER	30ft	9.1m	84in	2134mm
MG50-EV-40	STEEL	40ft	12.2m	84in	2134mm
MG50-EV-50	POLYMER	50ft	15.2m	106in	2692mm
MG50-EV-60	STEEL	60ft	18.3m	100in	2540mm
				115in	2921mm
				154in	3912mm
				131in	3327mm
				175in	4445mm
				148in	3759mm

TRAFFIC FLOW AND SPOUT ORIENTATION

LUBRICATION POINTS

**MIDWEST International**  
 Environmental Equipment for industry

Operational Headquarters  
 Midwest Plaza, 105 Stover Rd.  
 Charlevoix, Michigan 49720  
 Phone (231) 547-4000  
 Fax (231) 547-9453  
 a division of ron pair enterprises, inc.

REF. SERIAL NO. JOB NO. SHEET NO. DRAWING NO. MG50EVA

PREPARED FOR: **MG50-EV PARAGON™ SERIES RETRACTABLE BULK LOADING SPOUT FOR ENCLOSED VEHICLES**

DRAWN: KC DATE: 12 SEP 12 CHECKED: WP

This drawing and/or publication represents proprietary article and the designs, trade names or trademarks therein are either patented, have patents pending or are copyrighted internationally. Information appearing on this document remains the property of Ron Pair Enterprises, Inc. and is not to be reproduced without written authorization from an officer of this corporation.

REVISION	
NO.	DATE: