

PARTS

Item	Description	Quantity	WVD1	WVG1	WSD1	WSG1	WSG2
1	D-Ring	2		W819014			W819014
2	Filter, Intake	1		W423132			W423132
3	Carriage Screw; 10-32, 3/4 in (19.05 mm)	9		W423140			W423140
4	Acorn Nut, Self-locking; 10-32 UNF	9		W423141			W423141
5	Assembly, Brush & Spring; 115 V AC	2		W423117			—
5	Assembly, Brush & Spring; 230 V AC	2		—			W423118
6	Brush Cap with O-Ring	2		W423114			W423114
7	Casing Connector	—		—			—
8	Variable Speed Switch	—		—			—
	514-O Non-foaming Vibrator Oil	14 oz		W655-143			W655-143
	Strap, Carry (not shown)	1		W819013			W819013
	514-B Shaft Lubricant	14 oz		W655-140			W655-140
	Permatex	11 oz		W657055			W657055

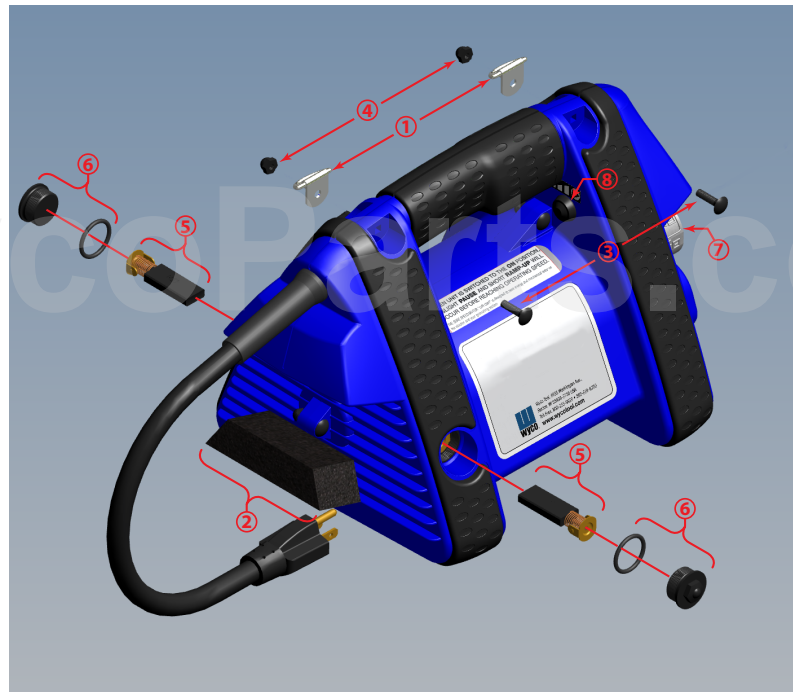


Figure 14: Parts locations

PREVENTIVE MAINTENANCE

Wyco vibrator motors are designed to operate 50...100 hours between normal preventive maintenance intervals. The service instructions below should be followed to perform the preventive maintenance.

⚠ WARNING

THERE ARE NO USER SERVICEABLE PARTS CONTAINED WITHIN THE MOTOR HOUSING. OPENING THE MOTOR HOUSING MAY BE DANGEROUS AND WILL VOID THE WARRANTY. ANY REPAIRS THAT REQUIRE OPENING THE MOTOR HOUSING SHOULD BE PERFORMED AT AN AUTHORIZED WYCO SERVICE CENTER OR AT THE WYCO FACTORY. USE ONLY FACTORY AUTHORIZED REPLACEMENTS PARTS.